



Buckden House

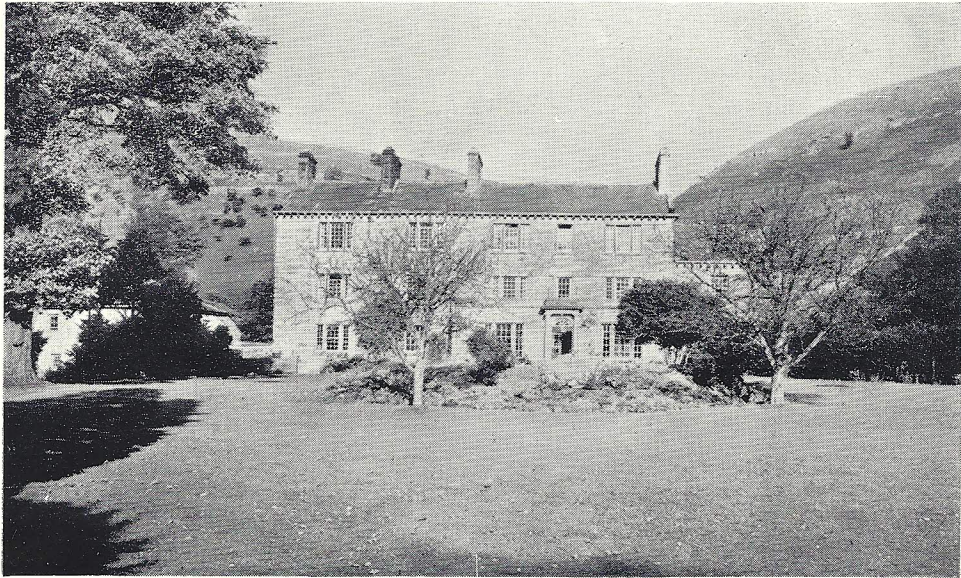
METHODIST GUILD GUEST HOUSE
BUCKDEN, Upper Wharfedale, YORKSHIRE

A lovely Georgian Manor House at the head of Wharfedale,
one of the most delightful of the Yorkshire Dales.



To _____

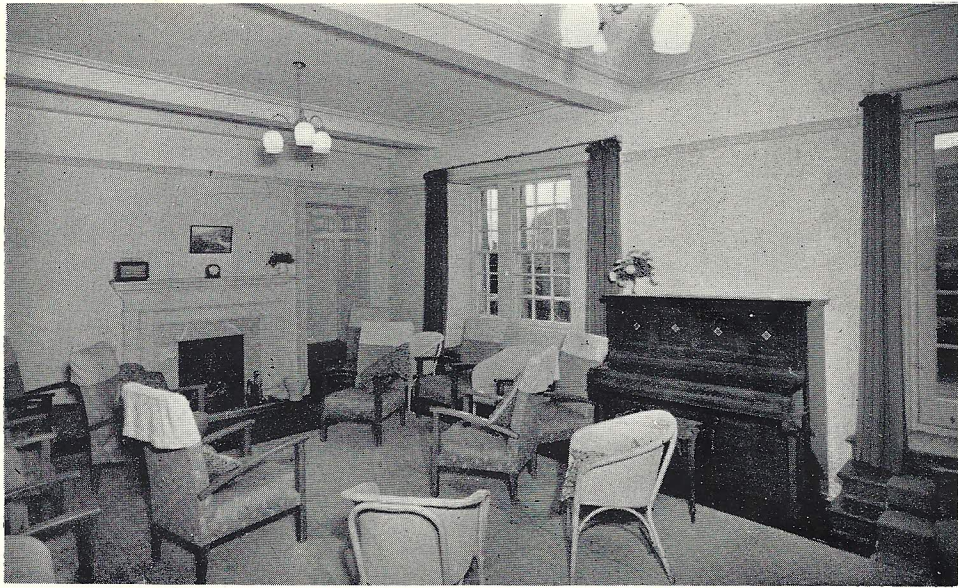
Photographed and Published by Hamilton Fisher, 3 Pimlico, Torquay



Buckden House from the lawn



The Common Room and Entrance Hall



The Drawing Room overlooks the Deer Park



The Dining Room