



# Puffin Cottage

Lesbury Nr. Alnmouth  
Northumberland NE66 3PW



Puffin Cottage sits on a quiet lane in the heart of Lesbury, one of the prettiest and best kept villages in Northumberland. This delightful, stone-built detached cottage, has all the accommodation at ground level.

A former Alnwick Castle Estate cottage which has been lovingly renovated. The original character, exposed stonework and a beautiful 'Inglenook' fireplace in the cosy sitting room combine with contemporary comforts such as the modern bathroom and fully equipped fitted kitchen. *The property oozes charm.*

This is an ideal location for walkers, cyclists, bird watchers and beach lovers.

Alnmouth and Alnwick are just a short drive away.

### **Accommodation**

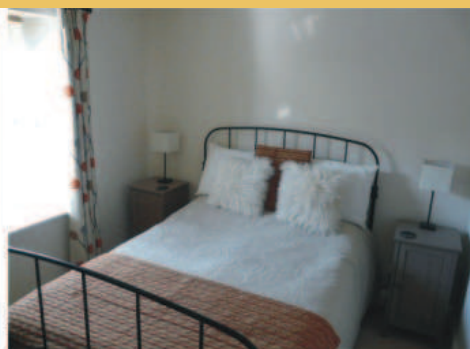
One bedroom sleeping 2 in double bed.

Modern bathroom with shower-bath, basin and WC.

Well equipped kitchen.

Sitting room with dining area.

Hall with storage.



## **Amenities**

Full gas central heating with additional heating from woodburning stove in sitting room. Electric induction hob, electric oven, microwave, fridge/freezer, washer/dryer, dishwasher, colour TV with 'Sky Freeview' and DVD/CD player with surround sound. Library of books/CDs/DVDs. All gas, electric, bed linen and towels included along with initial supply of logs for woodburning stove. Additional logs can be purchased from ourselves.

The private lawned garden and patio area with garden furniture is ideal for relaxing.

Off road parking for 2 cars.

Secure bike storage available on site.

One well behaved dog welcome.

**Sorry no smoking.**

Village shop and pub within 5 minutes walk.

Bookings are from Friday to Friday.

Short breaks available out of season or last minute.

Please contact.

Sandra & Gordon Kilvington: 01756 760246

Linda & Keith Portman: 01756 761019





## **Northumberland**

Northumberland offers miles of golden sandy beaches and stunning untouched countryside. Famous for its history and natural beauty, Northumberland provides clean and safe award-winning beaches as well as access to many traditional Northumbrian towns and villages that can be easily reached by car or reliable public transport from Puffin Cottage.

There are more castles here than anywhere else in England. The birthplace of English Christianity on the Holy Island of Lindisfarne, the historic World Heritage Site of Hadrian's Wall and stunning Alnwick Castle and Garden are all within easy reach of Puffin Cottage. You can also take boat trips to the Farne Islands and Coquet Island to see the Seals, Puffins and other sealife.

## **Lesbury**

Lesbury is a small rural village, situated on the north bank of the Aln river. Only 1½ miles from the coastal town of Alnmouth with its lovely sandy beach and welcoming pubs, restaurants and shops and just 3½ miles southeast of Alnwick. Lesbury sits on the main 'Coastal Route' and the section of the National Cycle route I known as 'Coast and Castle South' and has exceptional transport links that include a regular bus service that operates throughout Northumberland and regular East Coast line trains into Newcastle, Berwick, Edinburgh and Glasgow from Alnmouth railway station (just ½ mile away).

The Coach Inn, only a few minutes walk from Puffin Cottage is a traditional English public house, serving good food, real ales and fine wines and there is a small shop in the village. While nearby Alnmouth, Alnwick, Amble and Bamburgh provide a host of shops, restaurants and pubs as well as loads of things to do, including Northumbrian tourist attractions.

*A perfect location for a holiday!*

