



To see what's happening in the Craven community and voluntary sector visit the Community Action in Craven Facebook page, <https://www.facebook.com/cravencvs.org.uk/?fref=ts>

We also share a Facebook page Craven Volunteer Centre at, <https://www.facebook.com/CommunityActioninCraven?fref=ts>

From: Craven District Council [mailto:edu=cravencd.gov.uk@mail205.atl81.rsgsv.net] **On Behalf Of** Craven District Council

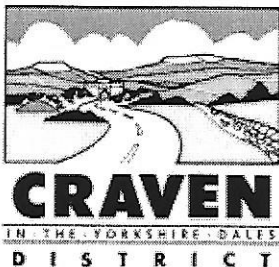
Sent: 14 December 2016 06:45

To: Rowena

Subject: Funding Available - Yorkshire Dales LEADER Programme

Craven District Business News

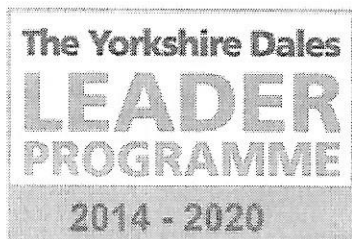
[View this email in your browser](#)



Craven District Business News

Best Wishes for a very Merry Christmas and a Prosperous New Year from all of the Economic Development Team at Craven District Council.

This special newsletter focuses on the opportunities for Craven businesses to apply for funding through the Yorkshire Dales LEADER Programme.



Yorkshire Dales LEADER Open for Funding Applications

The Yorkshire Dales LEADER Programme is seeking applications from new and existing businesses based in the Craven District who require funding for activities including the purchase of equipment, diversification of products and services or construction of buildings. With grants available from £5,000 up to £150,000 projects must align with one of the six LEADER priorities of business growth, tourism, culture, rural services, forestry or farming.

The Programme is currently accepting applications from projects that require funding from April 2017 onwards and will create jobs, develop rural businesses or support the rural economy. Applications for funding will be considered in the order they are received with the final opportunity to submit an outline bid likely to be summer 2017.

Details of each funding priority can be found below. Full details on the Yorkshire Dales LEADER Programme, including contact details for the LEADER Co-ordinator: Rima Berry, are available on the website www.yorkshiredalesleader.co.uk



Micro or Small Enterprise and Farm Diversification Capital Grant Scheme

The purpose of this grant is to:

- Establish a new rural business;
- Grow or expand an existing rural micro or small business;
- Invest in complementary activity that enables the agricultural sector to increase sustainability.

Although open to all businesses, applications from the food & drink, digital or construction sectors would be especially welcome.

Further information on this call is available at
www.yorkshiredalesleader.co.uk/apply

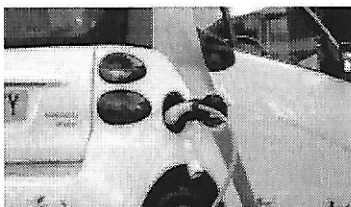


Tourism, Heritage and Culture Capital Grant Scheme

The purpose of this grant is to:

- Improve the quality of the tourism "offer" by creating new experiences and / or enhancing existing tourism facilities;
- To grow a sustainable rural economy by developing diverse economic growth and creating sustainable communities, capitalising on the areas' internationally recognised distinctive environment, landscape, culture and heritage;
- Combine accommodation and activity experiences which result in visitors staying longer in the area;
- Increase visitor spend;
- Support the identity of the area covered by the Yorkshire Dales LEADER Local Development Strategy.

Further information on this call is available at:
www.yorkshiredalesleader.co.uk/apply

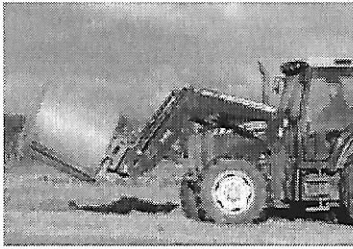


Sustain and Enhance Rural Services Capital Grant Scheme

The purpose of this grant is to:

- Invest in innovative community-led, and voluntary sector service delivery initiatives;
- Build community involvement, capacity and leadership;
- Support community and social enterprise start up and development;
- Develop investment areas for natural environment work that benefit the community and economy.

Further information on this call is available at:
www.yorkshiredalesleader.co.uk/apply

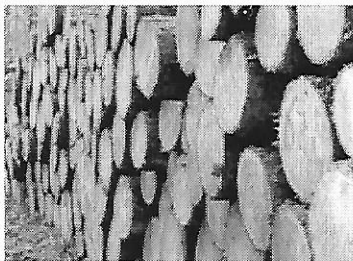


Dales Farm Capital Grant Scheme

The purpose of this grant is to:

- Develop the resilience, profitability and sustainability of farming businesses through the collaboration, added value local products, new technology and research;
- Support innovative, entrepreneurial activity and diversification in order to improve quality and profitability;
- Support the development of small scale bio / renewable energy generating capacity.

Further information on this call is available at:
www.yorkshiredalesleader.co.uk/apply



Forestry Capital Grant Scheme

The purpose of this grant is to:

- Develop the resilience, profitability and sustainability of forestry businesses and processing supply chain through business collaboration and added value local product;
- Introduce new technology, goods, processes and timber services;
- Create new jobs and employment opportunities in forestry and timber processing in the rural Yorkshire Dales LEADER area;
- Generate energy from locally sourced timber;
- Address long-term market failure in the local forest supply chain;
- Bring local woodlands into management and enhance their natural value.

Further information on this call is available at:
www.yorkshiredalesleader.co.uk/apply